

PAYNES FOREST CREEK

DIRECTIONS TO PROPERTY

From Ocala, travel east on State Road 40 (Silver Springs Blvd.) approximately 2 miles east of Silver Springs to County Road 315.

Turn left onto C. R. 315 and travel north 11 miles to Fort McCoy. Continue north on C.R. 315 through Fort McCoy another 6 1/2 miles to N. E. 212th St. Rd.

Turn right onto N. E. 212th St. Rd. and travel east for 1/12 miles to the west entrance of Paynes Forest Creek on the left between 2 powerlines or to the east entrance, located 1/4 mile east of power lines (see signs).

SCHOOLS: Fort McCoy Elementary 546-5925
Fort McCoy Middle 546-5925
Fort McCoy High 620-7587

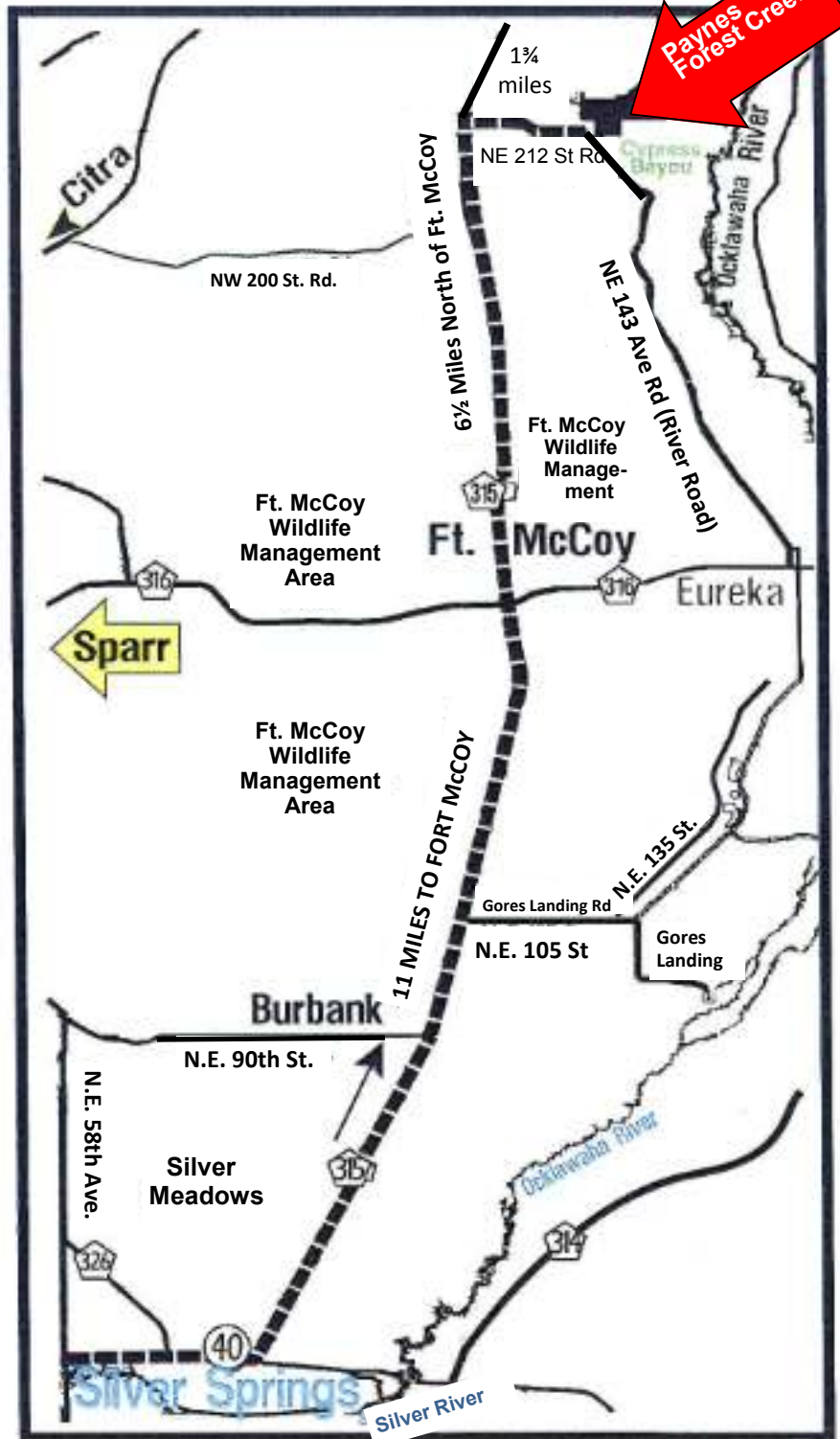
Parcel Number: 04573-005-00

Parcel Number: 04573-015-00

Parcel Number: 04573-040-00

Parcel Number: 04573-041-00

Parcel Number: 04573-047-00



STEVE RUDNIANYN

BUSINESS: (352) 629-6101 ext 602

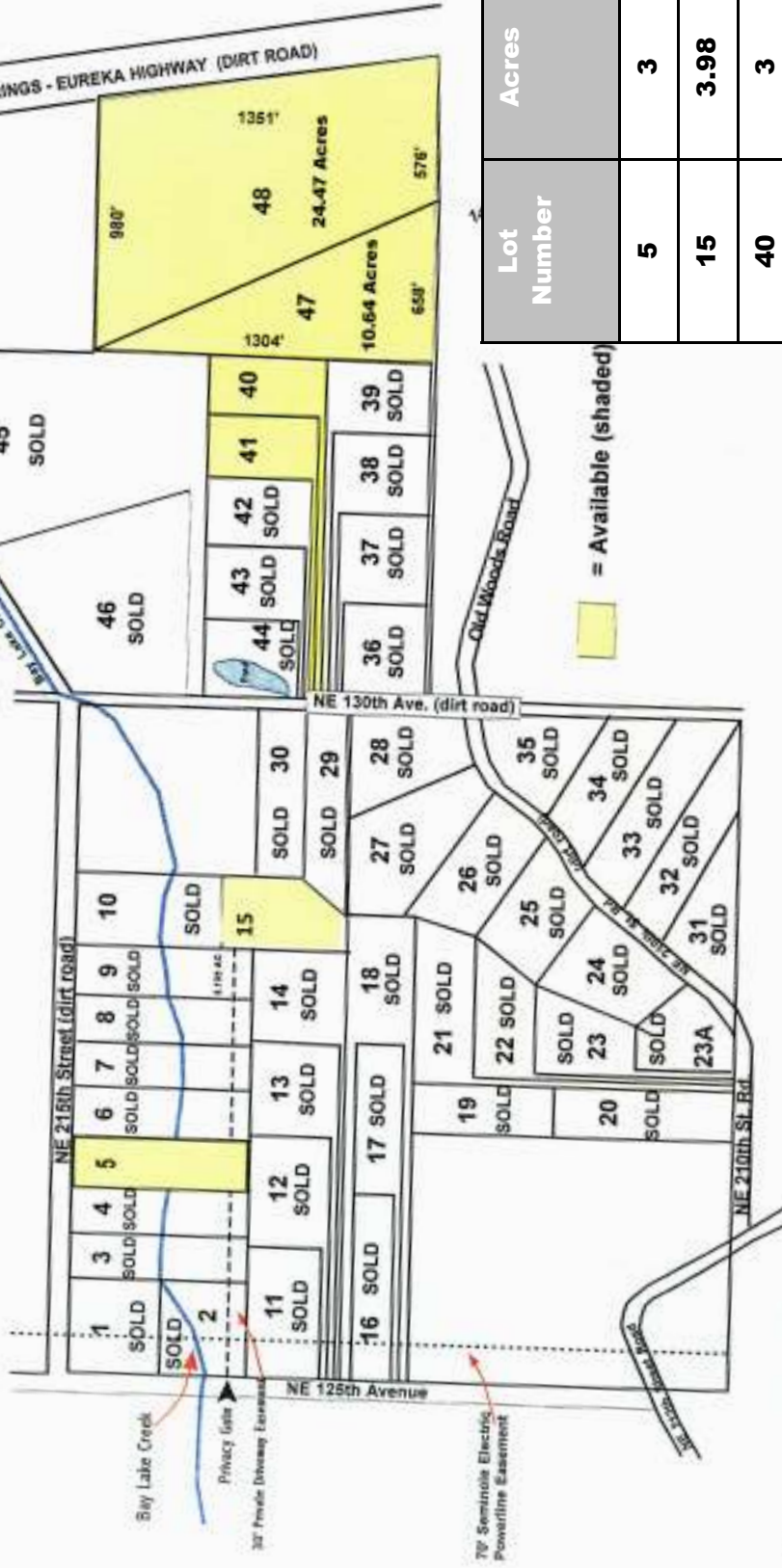
INTERNATIONAL PROPERTY SERVICES CORP. REALTOR 2441 NE 3rd Street, Suite 201, OCALA, FL. 34470
CELL: (352) 804-0334 FAX: (888) 311-7921 E-MAIL: SR@IPSocala.COM

All information contained herein was obtained from sources considered reliable. International Property Services Corp. makes no warranties or representations, expressed or implied as to the accuracy of the information. This information is offered subject to misstatements of facts, errors, omissions, prior sale, rental or withdrawal from the market, or change in price, terms and conditions without notice and is subject to any special conditions which may be imposed or made by Seller. Seller reserves the right to accept or reject any and all offers. The information contained herein is for information purposes only and shall not constitute a warranty or assurance that the information is correct. Any person intending to rely upon the information supplied herein should verify said information independently.

P:Faith/Brochures/PaynesForestCreek/110900

PAYNES FOREST CREEK

A Park-Like Setting Under Tall Pines... Quiet and Peaceful.
Home to Whitetail Deer and Wild Turkeys! Great Fishing
Nearby in Lake Ocklawaha and Ocklawaha River.



Lot Number	Acres	Price
5	3	\$ 13,900
15	3.98	\$ 11,900
40	3	\$ 13,900
41	3	\$ 13,900
47 & 48	35.11	\$ 140,000

STEVE RUDNIANYN

**INTERNATIONAL PROPERTY SERVICES CORP. REALTOR 2441 NE 3rd Street, Suite 201, OCALA, FL. 34470
CELL: (352) 804-0334 FAX: (888) 311-7921**

BUSINESS: (352) 629-6101 ext 602

E-MAIL: SR@PSocala.COM

All information contained herein was obtained from sources considered reliable. International Property Services Corp. makes no warranties or representations, expressed or implied, as to the accuracy of the information. This information is offered subject to misstatements of facts, errors, omissions, prior sale, rental or withdrawal from the market, or change in price, terms and conditions without notice and is subject to any special conditions which may be imposed or made by Seller. Seller reserves the right to accept or reject any and all offers. The information contained herein is for information purposes only and shall not constitute a warranty or assurance that the information is correct. Any person intending to rely upon the information supplied herein should verify said information independently.